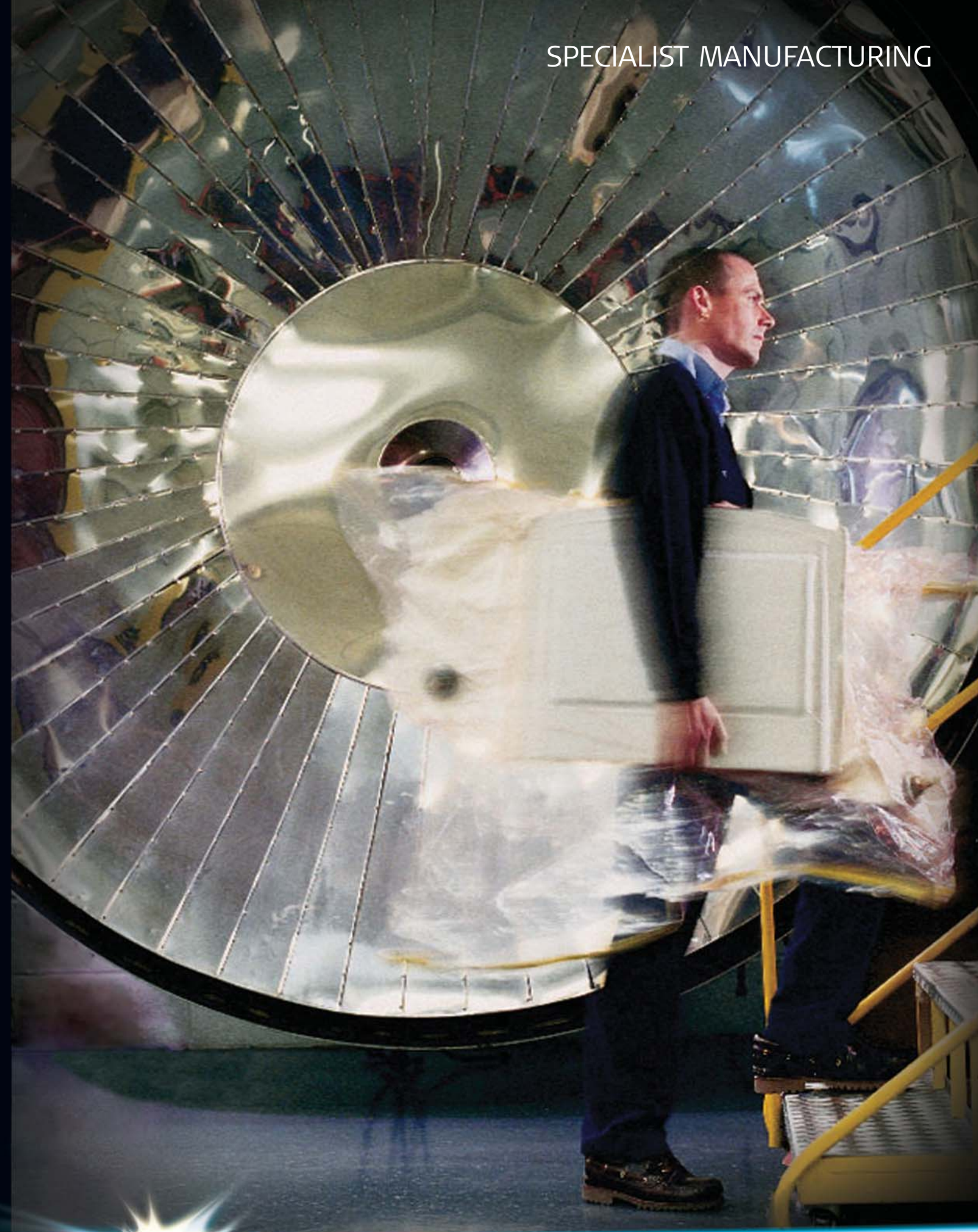
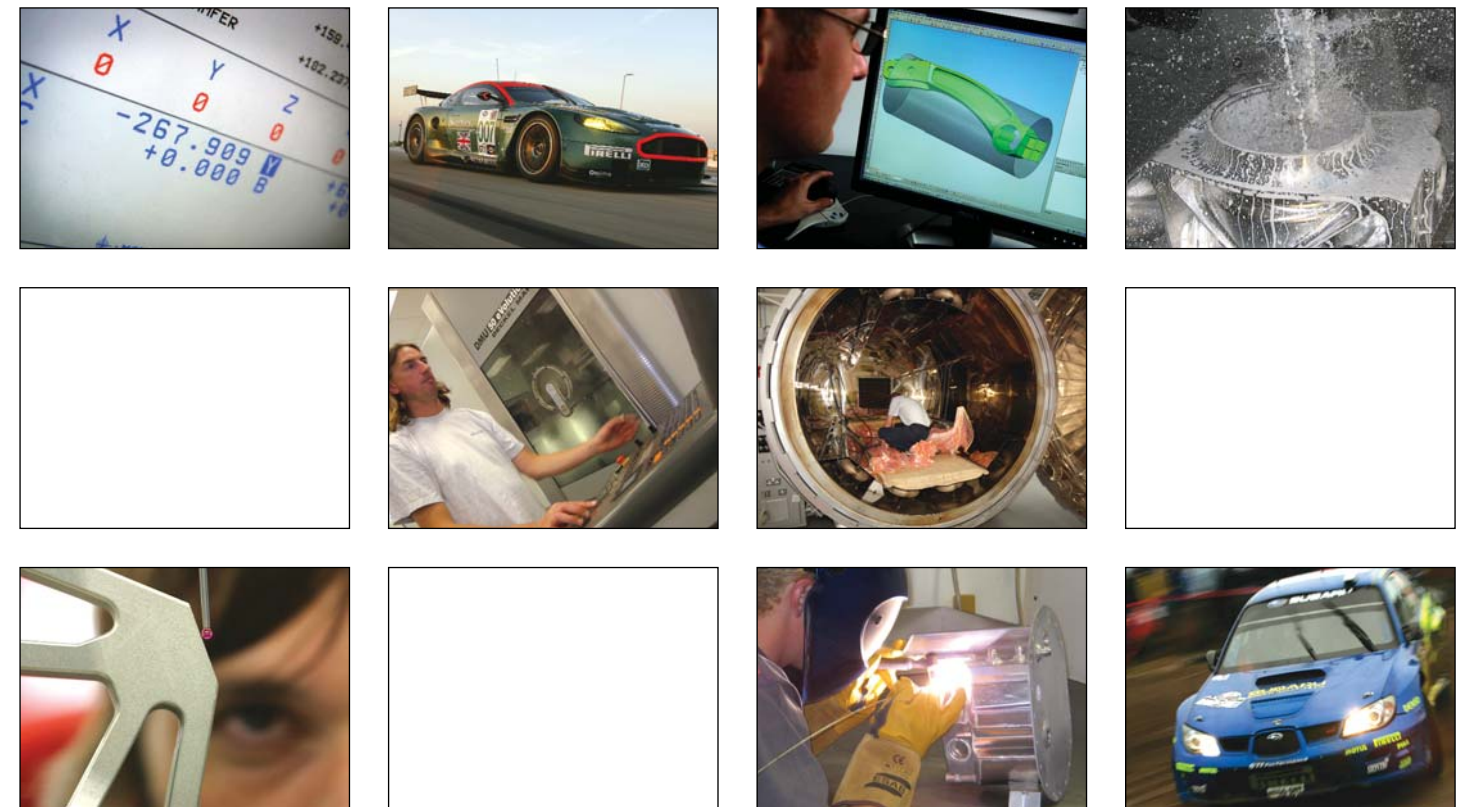


SPECIALIST MANUFACTURING





Prodrive is the world's leading independent motorsport and automotive technology business.

During the last two decades we have won international races and rallies across the world, including six World Rally Championship titles; five British Touring Car Championships; as well as the Le Mans 24 Hours GTS class.

We are currently responsible for the design, engineering and manufacture of the Subaru World Rally Car and the Aston Martin DBR9 sports car.

The processes and techniques we employ to make the parts and systems for these specialised competition cars is something we now offer to businesses in the automotive, aerospace and other specialist industries where customer-specific, low volume manufacturing is required.

In 2005, for example, we worked with Surrey Satellite Technology to manufacture lightweight panels for imaging satellites. The eight panels were produced using both our in-house machining and composite operations and had to pass strict quality control processes as the panels would be subjected to temperature extremes of -200°C to 100°C in space.

Our motorsport experience means that we are used to working to strict budgets, tight timescales and fine tolerances and constantly applying innovative ideas to deliver results. We also understand the effects harsh environments can have on materials.

## COMPOSITES

We have one of the UK's largest dedicated composite operations which designs and manufactures all the composite components for our race and rally cars, as well as for Formula One teams.

As well as producing all the precision carbon fibre components for our own motorsport programmes, we offer our facilities to customers within and outside the motorsport industry. Through a flexible approach, we work to their timescales and budgets to deliver their specific projects.

Our composite facilities include:

- Clean room with temperature and humidity control
- Three autoclaves 3.5m x 5m, 2m x 4m and 1m x 2m
- Oven 2m x 3m
- Trim shop with separate extraction, bonding and assembly rooms
- Separate break-out and core preparation rooms

## MACHINING AND FABRICATION

We pride ourselves on being able to manufacture nearly every component that we need to build our race and rally cars. These parts range from safety critical suspension and steering components, to the intricate machining of engine and transmission housings.

We have a comprehensive machineshop with three, four and five axis CNC machining and turning centres and EDM machines, which are all programmed using the latest software.

Our modern fabrication workshop has all the necessary equipment and our technicians use the latest fabrication techniques to make complex welded assemblies.

We have the technology to design, draw and fully manufacture a wide range of engineering components using Unigraphics NX and Catia V5 CAD/CAM software.

Our machining and fabrication operations are accredited to BS EN ISO 9001-2000.

For further details on our specialist manufacturing capabilities please contact David Eszenyi:  
 T. +44 (0)1295 754306 E. DESZENYI@PRODRIVE.COM